



# A QUICK TOUR OF CHULALONGKORN UNIVERSITY

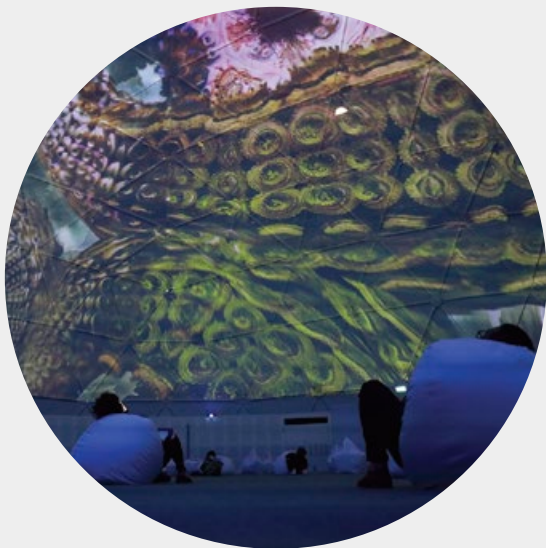




**ON THE COVER:** Panisara Arayathaworn  
Panisara is one of our exceptional law graduates.  
She was honored with the Royal Student Award 2019  
for exemplary behavior and determination, and  
has won the national speech and debate competition  
with recognition from Her Royal Highness Princess  
Maha Chakri Sirindhorn.



# CONTENT



**04**

About  
Chulalongkorn  
University

**06**

Welcome  
to Bangkok,  
Thailand

**08**

Why study at  
Chulalongkorn  
University?

**12**

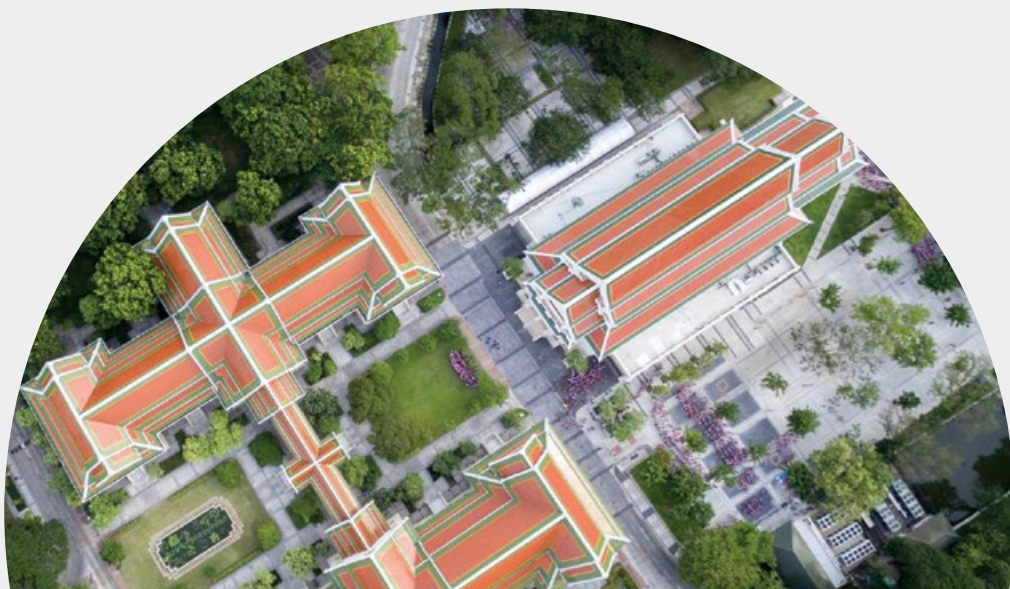
Facts &  
Figures

**14**

Visiting  
Dignitaries

**16**

Life at  
Chulalongkorn  
University





52

Tuition Fees  
for International  
Students

40

Spotlight

46

Partner  
Universities

54

Map

42

Only @Chula

48

Admission

44

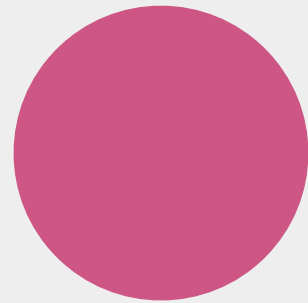
Faculties &  
Departments

50

Academic  
Calendar

56

Contact





# ABOUT CHULALONGKORN UNIVERSITY

For over a century, Chulalongkorn University is committed to be at the forefront of higher education, delivering quality education and professionalism.

As Thailand's first institution of higher learning, Chulalongkorn University has dedicated itself as the center for academic learning and professional excellence. The university's mission and commitment to public service uphold the visions of the university's founder, King Rama VI, who established Chulalongkorn University as a tribute to his father, King Rama V.

Whether through the pursuit and development of knowledge, or the application and dissemination of learned concepts, Chulalongkorn University works to empower students with professional know-how and research skills, as well as preserve the arts, culture, and values. Added to the academic learning is the university's commitment to instill in Chula graduates a sense of morality, social responsibility, and service to society.

As Thailand's leading university, Chulalongkorn University aims to be a model institute of education, setting the standard as a university of innovations for society. The university focuses itself on three social development core principles: preparing future leaders, developing impactful research and innovations, and advocating social sustainability.

Chulalongkorn University has 19 faculties, and 24 schools, colleges, and institutes, and 7,996 faculty members. Currently, there are over 40,000 students, including more than 28,000 undergraduate and 12,000 postgraduate students.

\*Source: Office of Strategy Management and Budgeting, Academic Year 2022

An aerial photograph of a university campus. In the foreground, there are several large, traditional Thai-style buildings with white facades and multi-tiered, orange-tiled roofs with green and gold trim. To the left, a circular landscaped area with concentric green and yellow patterns is visible. In the background, modern multi-story university buildings with white facades and grid windows are situated. A red wireframe mesh is overlaid on the top half of the image, creating a grid pattern that follows the contours of the buildings and landscape. The sky is overcast and grey.

1st

Institution of  
Higher Learning  
in Thailand



706

# WELCOME

to Bangkok,  
Thailand





## Bangkok, Krung Thep Maha Nakhon, or the “City of Angels”, is the world’s premier destination for business and leisure, and a melting pot of visual delights, awe-inspiring sights, and cultural experiences.

---

Our students, although from diverse backgrounds, are united in their commitment to academic excellence. Students at Chulalongkorn University will gain new cutting-edge knowledge and wisdom for their careers, research work, and the betterment of society. Over the past 106 years, Chulalongkorn University is proud to have made an impact on the lives of countless of graduates.

For most students, university enrollment is a new chapter in their lives, with new roles and responsibilities as well as the challenges of adapting to a new environment. Chulalongkorn University works to foster a stimulating academic environment, one that includes a healthy social life, and a balance between class and extracurricular activities.

Life for Chula students is centered in Bangkok, the bustling and ever-growing metropolis known by locals as Krung Thep, or the “City of Angels”. The city is the world’s premier travel destination, a melting pot of visual delights, awe-inspiring sights, and cultural experiences. This unique location makes studying at Chula a journey of exploration and self-discovery that helps students grow, while developing their knowledge and skills.

There is never a shortage of activities to do and places to visit after class and on the weekends in Thailand’s capital. Art enthusiasts can choose to visit any of the 20 museums as well as numerous historical buildings, art galleries and performance halls in and around the university. Avid readers can find a diverse selection of books at the university’s Book Center and several dozen bookstores in the vicinity. Food aficionados, moreover, will never go hungry with the numerous canteens on campus, along with food shops and restaurants off campus. Last but not least, Bangkok is well-known as a shopping paradise and there are over 10 big and small shopping centers right around the campus corner, such as MBK Center, Siam Paragon, Central World, Samyng Mitrtown and Chamchuri Square.

Even with rush hour traffic, students will find that traveling in and around Bangkok from the campus is convenient and safe, with easy access to various forms of public transportation, including bus, BTS sky train, MRT subway, and even express boats.

# WHY STUDY AT CHULALONGKORN UNIVERSITY?

With the knowledge and skills acquired, Chula students will become leading thinkers and innovators who are ready to responsibly contribute to society with sustainability.





# Because Chula is a world-renowned educational institution dedicated to three main goals:

## Creating Future Leaders

# 1

As thinkers and innovators, Chula students will play a crucial role in propelling the economy, providing solutions for society and addressing the challenges and impediments to national development. In the past academic year more than 75% of our graduates landed a job before graduation and many alumni are now working in leading business firms, government agencies and organizations that serve as the driving force in society, both nationally and internationally.

Recently, the university has helped launch over 50 startup companies in the Chula Community. Known as the Chula Spin Off, under the CU Innovation Hub, the university is set out to turn the research work developed at Chulalongkorn University into commercial endeavors. Some examples of these startups are the ChulaBaiya vaccine innovation, PhytFoon spray to reduce PM2.5 dust and the Shield+ a mask spray, which all add up to an economic value that is worth billions.

Moreover, Chula is ranked highest among the leading universities in Thailand. From 2021–2022, QS World University Rankings listed the university as one of the world's Top 100 for academic reputation for two consecutive years, while the Times Higher Education Impact Rankings placed the university first in overall sustainability performance among all Asian Universities.

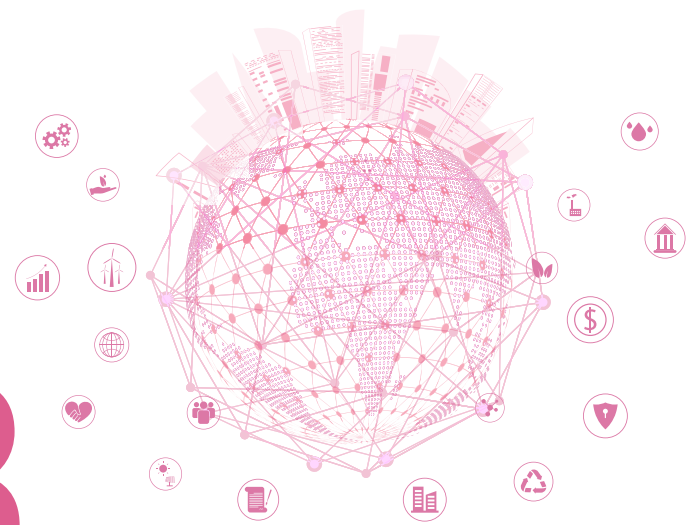
# Impactful Research and Innovations

## 2

Focused on solving problems and raising the quality of life for Thai people, the CU Innovation Hub: CU iHub and the CU Social Innovation Hub: CU SiHub were established to promote the creation of innovations beneficial to society, respond to the needs of the community, society and the environment, as well as to ensure that change can occur in an efficient, continuous and sustainable manner. As witnessed in many projects, importance is given to both the sciences and social sciences, such as the Digital Economy & Robotics, Aging Society, Sustainable Development, Inclusive Community & Smart City and Sustainable Community, and Creative Tourism.

The University has also set up the Chulalongkorn University Technology Center (UTC) in order to support Deep Tech research, which involves in-depth and more complicated technologies in the form of Artificial Intelligence (AI), Medical Technology (MedTech) and Biotechnology (BioTech). The research and discoveries have been presented to the innovation market in a tangible manner, such as the AI innovation for colorectal cancer detection through DeepGI or the needleless vaccine for farmed fish (Aqua Innovac).





# 3

## Sustainability

Located in the heart of the city, Chula is dedicated to the concepts of sustainability and becoming a Green University. For years, the university has implemented environmentally responsible policies that are conducive and sustainable for students and the public in and around campus. Through the Institute of Environmental Research, studies to design and renovate buildings to conserve energy are carried out, including projects for solar cell installation. At the same time, the university is constantly in the process of building for the environment and never stops to come up with plans for new green areas, like the CU Centenary Park, a park dedicated to the public for rest, recreation and community activities. In terms of life on campus, the university has maintained the green goal with the electric CU Pop Bus on-campus transportation, and implemented proper ways of handling garbage and water with the CHULA Zero Waste, which emphasizes on separating trash to reduce the overall garbage volume.

Moreover, Chula has created spaces for the promotion of learning beyond the classroom that synergizes art, science and the environment, including the Chula Art Town, Chamchuri Art Gallery, Chula Museums, FAAMAI Digital Art Hub and co-working spaces.

From the very first day, over a hundred years ago when its classroom doors opened to learners, Chulalongkorn University has grown and achieved. Now, to continue its success, the university is ready to proudly move forward through leadership, innovation and sustainability.

# FACTS & FIGURES

The best of the old and the new. In addition to having the longest history in Thailand, Chulalongkorn University holds a number of interesting facts & figures.

## Establishment

Thailand's first university, established in 1917

## Campus area

**456**  
acres

## Location

Located in the heart of Bangkok's central business district at 254 Phayathai Road, Pathumwan, Bangkok, Thailand 10330

## Vision 2021-2024

Lead in creating knowledge and innovations that will build and support a sustainable society

## Emblem

**Phra Kieo**

(Coronet for princes and princesses)

## University color

**Pink**

## Student Body\*

Bachelor	28,457
Master	8,855
Doctoral	3,059
Higher Graduate Diploma	829
Graduate Diploma	62
Total	41,262

## Chula Personnel\*

Faculty	3,040
Academic Staff	4,956
Total	7,996

## Research and Funding\*\*

Publication  
in Q1 Journal

# 2126

Scopus, 2021–2022

## Intramural Grants\*\*

for 704 projects

# \$18.8 M

Exchange rate:  
USD 1 = THB 34.46  
(as of March 2023)

## Extramural Grants\*\*

for 495 projects

# \$53.8 M

Exchange rate:  
USD 1 = THB 34.46  
(as of March 2023)

## Academic Reputation

# No.1

in Thailand for the 14th  
consecutive year

By QS World University  
Rankings (2021–2022)

## Sustainable Development Goals

Top 16 in the  
World by Time  
Higher Education  
World Impact  
Rankings 2022

## Innovations

Startups

# 300+

Under CU Innovation Hub, 2021

## Market Value

# \$45.3 M

Under CU Innovation Hub, 2021

\*Source: Office of Strategy Management and Budgeting, 2022

\*\*Source: Office of Research Affairs, 2021

# VISITING DIGNITARIES

Over the past century, Chulalongkorn University has received a number of dignitaries and eminent guests. Among those who have visited the campus, here is a list of the iconic and famous visitors who are a part of Chulalongkorn University's history.



## 1915

3 JANUARY 1915

**His Majesty King Vajiravudh** laid the cornerstone of the school building and headquarters of Chulalongkorn University.



## 1996

29 OCTOBER 1996

**Her Majesty Queen Elizabeth II of the United Kingdom**, graciously visited Chulalongkorn University for the second time.

## 1973

JUNE 1973

**Her Royal Highness Princess Maha Chakri Sirindhorn** enrolled as a student of the Faculty of Arts, Chulalongkorn University, and graduated with a Bachelor of Arts (First Class Honors, Gold Medal) in 1977.



## 1996

26 NOVEMBER 1996

**William Jefferson Clinton**, the 42nd President of the United States, was presented with an Honorary Doctorate in Economics.

## 1997

7 JULY 1997

**Nelson Rolihlahla Mandela**, President of the Republic of South Africa, was presented with an Honorary Doctorate of Arts. President Mandela delivered a speech entitled "Peace".



## 1998

31 JANUARY 1998

**James D. Wolfensohn**, President of the World Bank, delivered a speech entitled "Social Dimension: Impact of the Economic Crisis in East Asia".



## 2020

22 NOVEMBER 2020

**His Holiness Pope Francis**, Head of the Roman Catholic Church, delivered the speech, "Building Bridges for Peace and Understanding", to religious leaders, educational institution representatives, and the Chulalongkorn University community at the Chulalongkorn Auditorium.



## 2019

13 DECEMBER 2019

**Tim Cook**, Chief Executive Officer of Apple Inc., made a private visit to observe instructions and classes at Chulalongkorn University Demonstration Elementary School.







14 MARCH 1931

**His Majesty King Prajadhipok** arrived on campus to give the first Royal Commencement Speech at the Commencement Ceremony for Chulalongkorn University graduates.



13 APRIL 1946

**His Majesty King Ananda Mahidol** conferred diplomas to graduates of Chulalongkorn University, Academic Year 1944.

1931

1946



29 OCTOBER 1966

**Lyndon B. Johnson**, the 36th President of the United States, was presented with an Honorary Doctorate in Political Science.



1950

21 MAY 1950

**His Majesty King Bhumibol Adulyadej the Great**, accompanied by **Her Majesty Queen Sirikit, the Queen Mother**, conferred diplomas to graduates of Chulalongkorn University for the first time in his reign.

Their Majesties continued to visit Chulalongkorn University regularly until 1998.

1972

1966



11 FEBRUARY 1972

**Her Majesty Queen Elizabeth II of the United Kingdom, and His Royal Highness Prince Philip, the Duke of Edinburgh**, visited Chulalongkorn University for the first time.



2005

15 DECEMBER 2005

**His Majesty King Abdullah II of the Hashemite Kingdom of Jordan** was presented an Honorary Doctorate in Political Science.



2002

28 AUGUST 2002

**His Majesty Sultan Haji Hassanal Bolkiah Mu'izzaddin Waddaulah of Brunei Darussalam** was presented an Honorary Doctorate in Political Science.



2006

13 JUNE 2006

**Their Majesties Emperor Akihito and Empress Michiko of Japan** arrived at Chulalongkorn University for a private visit.

2011

16 NOVEMBER 2011

**Ban Ki-moon, the United Nations Secretary-General**, visited the Friends in Need (of "PA") shelter, aid distribution, and donation center at the Chulalongkorn University Indoor Sports Center.



2009

9 JULY 2009

**His Majesty King Maha Vajiralongkorn Bodindradebayavarangkun** congratulated Her Royal Highness Princess Sirivannavari Nariratana Rajakanya on her commencement day. The princess was conferred a Bachelor of Arts (First Class Honors, Gold Medal), Academic Year 2008.





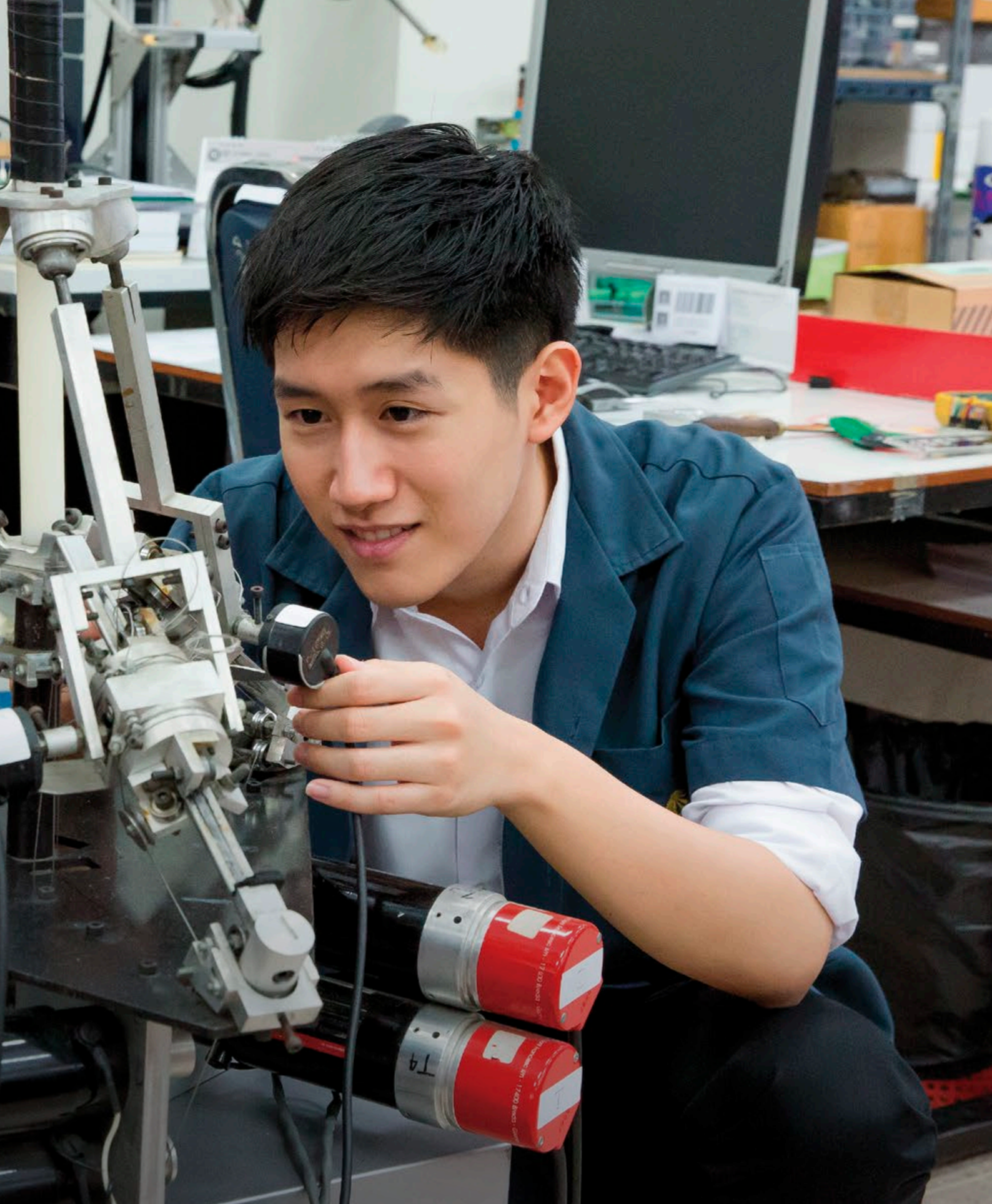
# LIFE

at Chulalongkorn  
University

The campus atmosphere at Chula is friendly, convenient, modern, and safe. Development of the university grounds is based on five smarts, including Smart Academy, Smart Classrooms, Smart Living, Smart Space, and Smart Health, which are all ideal for learning and exchanging cultures.



# SMART ACADEMY





# Center for Academic Resources (Central Library)

The Center for Academic Resources (Central Library) in the Maha Theerarajanusorn Building consists of the Central Library, National Documentary Center, Audio-Visual Center, International Information Resources Service, Art Gallery, and Distance Learning Network (CU-GDLN). Students can access to a full range of learning resources, including books, periodicals, databases, audio-visual contents and electronic materials.



Watch the central library tour clip at <https://youtu.be/s0ndcEN1mM8>

## Library Resources:

1

Number of Books (total)  
**834,427**  
titles

2

Number of E-thesis (CUIR)  
**64,634**  
records

3

Number of Journals  
**2583**  
titles

4

Number of Database  
**33**  
platforms

5

Number of E-books  
over  
**600,000**  
records



Contact: Center for Academic Resources  
Tel: +66 2218 2905  
Website: <https://www.car.chula.ac.th/>  
Facebook: <https://www.facebook.com/ChulaLibrary>



# Chulalongkorn University Technology Center

Chulalongkorn University Technology Center (UTC) is a platform for impactful research and innovations for deep technologies based on transformative engineering and scientific discoveries. UTC was established to address the gap between translating university research and IP to applications with commercial value. Working closely with university faculty, students, industries, and the government, the center identifies the most promising deep tech research areas for development and commercialization, solving the nation's biggest challenges.



Read more at

<https://www.chula.ac.th/en/highlight/67234/>

Watch the video: <https://youtu.be/f14579EMNgM>



## CU Innovation Hub

The CU Innovation Hub nurtures talents and develops innovations that transform how Thais live, learn, play and thrive. Through research, education, competitions and activities, the center is responsible for developing the creativity, critical thinking, and entrepreneurial skills of Chula students and personnel; distributing innovative ideas for the benefit of society and the economy.



Website: <https://cuinnovationhub.com/>

Facebook: <https://www.facebook.com/cuihub/>

## Siam Innovation District

A development project for the Siam Square and Pathumwan area, the Siam Innovation District (SID) is an endeavor to help move the country's education and industrial sectors into the Thailand 4.0 era. The project also helps to develop and support new entrepreneurs and Thai startups through the CU Innovation Hub.



Website: <https://siaminnovationdistrict.com/>





# CU Social Innovation Hub

Chulalongkorn University's Social Innovation Hub responds to the needs for social innovation in connection with the developments of a Global University. The center supports the University's strength as an outstanding incubator for various sciences, social sciences, humanities and applied arts. As a comprehensive university with multiple branches of knowledge and recognition at the international level, the Social Innovation Hub creates opportunities to develop local and global innovative collaborations. Such efforts are significant to effectively respond to major global problems and issues, such as aging research innovation, sustainable community and creative tourism, and sustainable global development.

 **Read more at**  
<https://www.chula.ac.th/en/highlight/74830/>

/22

## Research Cluster

Chulalongkorn University aims to raise the quality of research conducted by Chula research teams and place the university among the best in the world, with education and research that meet the highest international standards. The university is also dedicated to integrate research to education, in order to create knowledge and innovation, achieve economic as well as social advancement to develop the country and region, and help people enjoy a higher quality of life.

Chula plans to work towards research excellence in 19 clusters: Advanced Materials/ Aging/ ASEAN/ Bio-Refinery/ Climate Change and Disaster Management/ CU Cannabis/ Energy/ Energy Storage/ Food and Water/ Frontier Biotechnology in Emerging Diseases/ Genomic Medicine/ Health/ Labor and Workforce/ Microplastic and Plastic Waste/ One Health/ Smart City/ Innovation in Arts and Culture/ Tele-Health/ Tropical Medicine.

 **Website:** <http://www.research.chula.ac.th/>

## CHULA MOOC

Chula MOOC is a free online learning platform designed for the general public. The courses are easily accessible from anywhere and anytime at the user's convenience. After the course is successfully completed, students will be awarded a Certificate of Completion from Chulalongkorn University.

 **Website:** <https://mooc.chula.ac.th/>





# The Center of Learning Network for the Region

The Center of Learning Network for the Region, or CLNR, is responsible for developing the standard for teaching and learning with long distance communication technology, which all fits under the concept of e-learning. By developing research and activities to be carried out at the project stations, “Pha Singha” and “Lai Naan”, the university is able to transfer knowledge from Chula faculties and units to the citizens of Naan province and expand Chula’s role in the region.

 **Website:** <http://www.clnr.chula.ac.th/>

# Learning Innovation Center

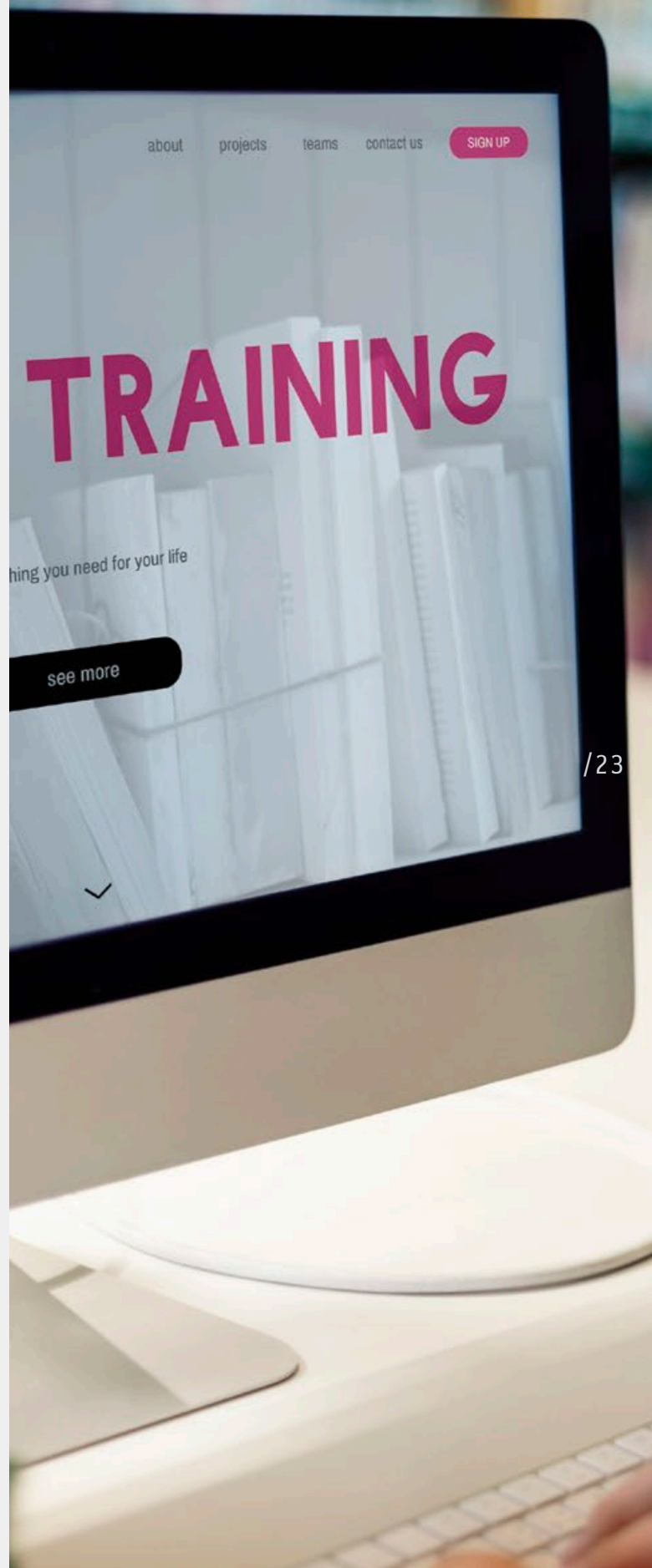
Following the University’s strategy for Learning Innovations for Lifelong Education, the Learning Innovation Center focuses on creating a network of lecturers to develop teaching and learning innovations, novel forms of relevant skills, and ways to support and encourage students to acquire lifelong capabilities and higher thinking. The center also functions as support for Active Learning, developing the Chula Clicker innovation and Courseville models for modern forms of classrooms, such as the Smart Classrooms, Interactive Classrooms and Multi-monitor Classrooms.

 **Website:** <https://lic.chula.ac.th/>

# CUVIP

Organized by the Office of General Education as a part of the innovative project to support personal development for Chula students, the program organizes activities for students to develop themselves into well-rounded individuals. The activities are selected and designed to tune the knowledge, thoughts, life skills and attitude of students, helping them to become capable graduates who are ready to grow, work, and function in society.

 **Website:** <http://www.cuvip.gened.chula.ac.th>  
**Facebook:** <https://www.facebook.com/cuvip.friend/>





A woman in a white shirt and patterned skirt is operating a professional video camera on a tripod in a studio. The studio is filled with various pieces of equipment, including cameras on cranes and monitors. In the background, there are mannequins with red hair. The scene is lit with professional studio lighting.

SMART

CLASS  
ROOMS



/26

# Chulalongkorn Healthcare Advanced Multi-Profession Simulation Center: CHAMPS

## Faculty of Medicine

Chulalongkorn Healthcare Advanced Multi-Profession Simulation Center (CHAMPS Center) was established to help medical students and healthcare professionals practice their skills and increase their confidence in patient care. The center is the country's first medical training center to receive a world-standard accreditation designated to leading medical schools.



Website: <https://champs.md.chula.ac.th/>



# CU Innovation Center for Veterinary Clinical Training

## Faculty of Veterinary Science

The CU Innovation Center for Veterinary Clinical Training (CU IC-VCT) was established for students to develop their skills for animal care in a virtual laboratory. The center is comprised of a three parts-laboratory classroom for medical procedures, simulation surgery classroom, and a multi-purpose classroom for pre-surgery group learning, which also serves as a Skills Lab to train students in medical procedures. Also provided by the center are academic services, such as training courses with specialists from Thailand and abroad. With ready facilities, equipment, and the ideal location in the heart of Bangkok, CU IC-VCT has become a reputable and popular venue for veterinarian training courses.



Facebook:  
<https://facebook.com/cuicvct1>



# Petralai Management Theatre (Blackbox)

## Faculty of Commerce and Accountancy

Constructed in the form of a theatre-style classroom with a seating capacity of 120, the theatre's audiovisual system creates an atmosphere that is different from the usual classroom setting. Petralai has adopted a method that incorporates acting techniques to teach presentational skills, communication for leadership, conflict management and negotiation skills, allowing students to better understand the academic concepts they are learning and be able to grasp concepts in a manner that is entertaining and a variation from the traditional ways of teaching.



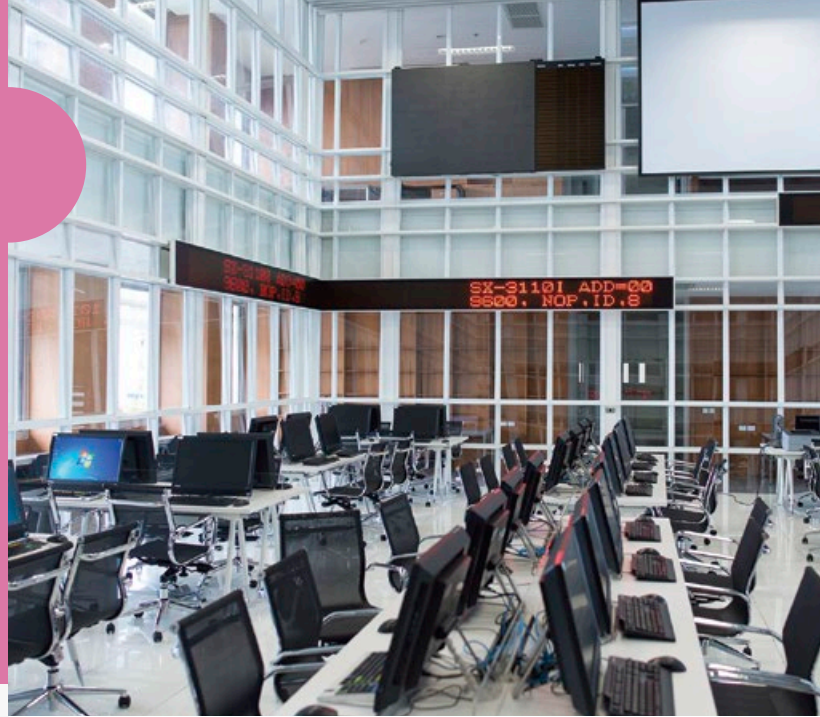
Facebook:  
<https://www.facebook.com/Petralai>



# FIN LAB

## Faculty of Commerce and Accountancy

A finance laboratory filled with financial data and designed to resemble a trading room, the lab displays a complete array of finance software and monetary databases from all over the world, such as Reuters, Bloomberg, and Morning Star. The lab is also equipped with a mockup program of the stock market, allowing students to observe actual stock movements and creating an enhanced learning atmosphere alongside research databases, such as Datastream, SDC Platinum, SETSMART.



# LawLAB for Startups

## Faculty of Law

The LawLAB project is home to LawLAB for Startups, a think tank on legal issues for startup enterprises, which serves as the first laboratory for students to train at first hand on legal issues related to the business sector. Students work with startup companies to exchange knowledge and discuss relevant legal issues faced by businesses for further analysis or research. Strategic plans and answers are formed under the guidance of a lab coach, an experienced lawyer from a renowned law firm, before advice or action plan is presented to the startup company.

# DO Visual Lab

## Faculty of Architecture

A room for thesis presentations with a special feature: panoramic screening on three sides via the Video Wall system. The high-quality projector is able to transfer images freely and easily as needed. With its versatility, the room can also be a venue for presenting exhibitions and organizing discussion forums.

127



# Center of Excellence in Digital Media

## Faculty of Communication Arts

The Center of Excellence in Digital Media is where Thailand's first academic High-Definition Virtuality Studio is located. Equipped with a high-definition system, the center contains a Master Control Room, HD Studio for radio and television, HD Virtual Studio, SD Studio, Computer Graphics Room, Still Photography Studio, News Room, Sound Recording and Editing Room, Radio Broadcasting Room, Computer Editing Room, and Screening Room.

# SMART



# LIVING





# CU NEX Mobile Application for Students



The CU NEX Application is a cooperative effort between Chula and KBank to make Chula a “Digital Lifestyle University”. Designed to assist and enhance student life at Chula, the app’s main features include Digital Student ID and My QR & Barcode, which provides access to news, event updates, the Chula Library, and other facilities. Students can check class schedules, make tuition fee payments and QR payments via the app. Also, CU NEX app users can get access to Reading Room Reservations, POP BUS Tracking, Chula 3D Map, Activity Reminders, Emergency Calls, and more.

The application is available for download on the App Store and Play Store.

**Facebook:**  
<https://www.facebook.com/CU-NEX-571951176497528>



/30

## One-Stop Service for Visa

The Office of International Affairs and Global Network provides visa service for the Chula community. More information on visa application is available at: <https://www.inter.chula.ac.th/visa/>

**Contact:** The Office of International Affairs and Global Network  
**Tel:** +66 2218 3134  
**E-mail:** [visa\\_oia@chula.ac.th](mailto:visa_oia@chula.ac.th)

## CU iHouse

The Chulalongkorn University International House (CU iHouse) is a 26-story, 846-unit, on-campus residence for international students and lecturers. Rooms come fully furnished with air-conditioning, modern conveniences, 24-hour security, safety systems, and shuttle bus service.

**Contact:** CU iHouse  
**Tel:** +66 2217 3188  
**E-mail:** [book@thecuihouse.com](mailto:book@thecuihouse.com)  
**Website:** [https://pmcu.co.th/?page\\_id=9795](https://pmcu.co.th/?page_id=9795)





# ON-CAMPUS TRANSPORTATION

## CU POP Bus (EV Shuttle Bus)

One of the fixtures on campus, the CU POP Bus is a free shuttle bus service that runs entirely on electricity. The service provides safe commutes, lessens the need for personal car use, and helps reduce CO2 emissions and PM 2.5 dust particles in the area. Passengers can easily access the location of a bus in real time with the 'ViaBus' application, making it easier to arrange travel plans. Navigating the campus has also become easier, especially for those new to the campus area.

See the CU POP Bus map at <https://www.chula.ac.th/en/about/green-university/cu-shuttle-bus>



## Anywheel – Bike Sharing

What is the greenest way to get around campus? Check out Anywheel, a bike-sharing service from PMCU to promote environmentally friendly transportation on campus. Bike-riding emits no carbon dioxide, decreases traffic on campus, and promotes a healthier and more sustainable lifestyle for students. Students can download the Anywheel application, add credit, unlock a bike by scanning the QR code, then ride on. The app also enables real-time tracking of the number of available bikes and parking spaces.

## Beam – E-scooter Sharing

If you are looking for a faster way to move around campus, but still keen on staying green, keep a lookout for Beam, an e-scooter service that is a part of PMCU's Samyan Smart City Project. The scooters are another option for clean energy mobility around Chulalongkorn University, Siam Square, Suan Luang, and Samyan neighborhoods. Commuters can download the Beam app, scan a scooter's QR code to unlock, and then take a ride. The app also allows for real-time tracking of the number of available e-scooters and nearby parking spaces.

## Muvmi – EV Tuk-Tuk

An on-demand tuk-tuk that runs 100% on electricity, offering services to passengers who wish to travel short distances. Passengers can access the Muvmi application anytime and anywhere to call the tuk-tuk as needed, or select the "Sharing" option to hitch a ride with other passengers heading to a similar destination, reducing the cost of the rides.

Website: <https://www.muvmi.co/en>





SMART



# SPACES



## Chula Museums

It is not an overstatement to say Chulalongkorn University is a source of learning. There are more than 20 museums under the university's operation and management, both in Bangkok and other provinces. Whether it is the Human Body Museum at the Faculty of Dentistry or the Chonlathassathan Marine Museum in Chon Buri province, the museum is either operated by the university or by a faculty, such as the Chulalongkorn University Museum of Natural History operated by the Faculty of Science.

 **Website:** <https://www.chula.ac.th/en/cu-services/creative-space/museums>

/34



## Chamchuri Art Gallery

A non-profit venue to display and exhibit artistic creations by lecturers, students, staff members and other artists. The gallery also serves as a center to exchange ideas and experiences of academics and art connoisseurs.

 **Facebook:** <https://www.facebook.com/chamchuriartgallery/>

## Chula Art Town

“Chula Art Town” is a public art project to blend art into the neighborhood areas around Chulalongkorn University. Created as a part of the CUART4C project by the Faculty of Fine and Applied Arts, Property Management of Chulalongkorn University (PMCU), Urai Phanich Co. Ltd. and ATM Spray (Graffiti community), “Chula Art Town” artists included a group of talented Chula students, lecturers and graffiti artists, gathered together to create street artwork on buildings in the Suanluang-Samyam-Siam Square areas. Through vibrant and stunning graffiti, the project illustrates how art can enhance the urban communities and increase the enjoyment of public space for passersby.

 **Map:** <https://artsandculture.google.com/story/sgWhgMUowHQPjw>





# PLEARN Space

## A New Learning Hub for Chula Students

Located on the 1st floor of Prem Purachatra Building, PLEARN Space is the first digital co-learning space for Chula students, teachers, and staff. Reconstructed from an old lecture hall into a common area, students can use the space to learn, meet for projects, or simply hang out. The facility is equipped with a number of technological gadgets and resources, such as private meeting rooms with wall projectors, photocopier machines, vending machines for food and drinks, locker space, and more.

Students can access the lounge using their student ID card or by obtaining a QR code from the CU NEX application.



/35

# CU Centenary Park

The CU Centenary Park was created as a dedicated green space for the city and to celebrate Chulalongkorn University's 100th anniversary. Located in a commercial and shopping center district, the park was designed as a multi-functional "urban forest" oasis for Bangkok's residents and visitors wishing to spend quality leisure time in a lush and pleasant environment. The park is home to a constructed wetland, rain garden, retention pond and underground water drainage system. It also holds an interactive virtual museum, featuring historical and socially engaging topics, with life-like exhibits periodically showcased at the main hall of the park.

Apart from the greenery of the trees and shrubs, park-goers can benefit from the many organized public activities, such as musical performances and festive events, which are all in line with the university's goal to foster a smart and inclusive society.





SMART



HEALTH

# Chulalongkorn University Health Service Center (CUHSC)

Supporting the health and wellbeing of students is one of Chulalongkorn University's utmost concerns. As a result, the Chulalongkorn University Health Service Center (CUHSC), located on the second floor of Chamchuri 9 Building, was set up to provide on campus preventative care, basic medical treatment, physical rehabilitation and other services as required. The clinic is operated by CUHSC's qualified practitioners and specialists from King Chulalongkorn Memorial Hospital.

**+** **Opening hours:** Monday – Friday, from 8:30 AM – 3:30 PM (Closed on weekends)  
**Tel:** +66 2218 0568  
**Website:** [http://www.cuhc.chula.ac.th/en\\_US/](http://www.cuhc.chula.ac.th/en_US/)



/38



## Osotsala Pharmacy

Osotsala is a community pharmacy and laboratory operated by the Faculty of Pharmaceutical Sciences, Chulalongkorn University. The center not only serves the medical needs for patients, but is also the site for supervised practical application of previously studied theory for all levels of Chula Pharmaceutical Sciences students. All services provided at Osotsala are supervised by a team of registered pharmacist faculty members. Also available for special cases are patient consultations and lifestyle modification suggestions. The center is conveniently located on Phayathai Road, opposite of MBK Shopping Center.

**+** **Opening hours:** Monday – Saturday, from 8:00 AM – 7:00 PM  
**Tel:** +66 2218 8428 to 9  
**Official Line ID:** @osotsala

## Chula Student Wellness

Chula Student Wellness is a health promotion center that supports the well-being and provides psychotherapy sessions for students and personnel at Chulalongkorn University. Counseling services are provided by professional psychologists and psychiatrists to support all who are in need of counseling, including study-related problems, relationships, stress, and behavioral disorders. The center also hosts regular workshops and activities to encourage well-being and self-development. To top it off, facilities at the center include reading corners and workstations surrounded by a relaxed ambience.


**+** **Opening hours:** Monday – Friday from 8:30 AM – 5:00 PM (Closed weekend)  
**Tel:** +668 5042 2626  
**Facebook:** : <https://www.facebook.com/chulastudentwellness/>



# Sport Centers

The **Chulalongkorn Stadium** is a large outdoor stadium that includes a soccer field certified by the International Federation of Association Football (FIFA), an eight-lane rubber running track certified by the International Association of Athletics Federations (IAAF), and an arena that accommodates up to 25,000 spectators.

Located nearby is the **CU Sports Complex**, a fully functional sports facility where students, faculty, and staff can enjoy a variety of sports, both on their own or with friends. Available within the complex are designated areas for badminton, swimming, boxing, judo, karate, taekwondo, yoga, aerobics, volleyball, basketball, and a fitness center equipped with exercise machines and sports equipment. The complex also serves as a venue for a number of sports competitions and training. Additional services, provided free to Chula students and staff and open to the public for a membership fee, include use of the university's stadium, tennis courts, indoor sport gyms, golf driving range, golf putting area, beach volleyball court, 25-meter and 50-meter swimming pools, and outdoor gym areas.

 **Website:** Everyday 8:00 AM – 8:00 PM  
**Tel:** +66 2218 2874 to 7 and +66 2218 2848  
**Website:** [www.cusc.chula.ac.th](http://www.cusc.chula.ac.th)



/39

# Mind Café and Mind Space

The latest mental-wellness service available for Chula students, the Mind Café and Mind Space platforms are channels to help students cope with the stress of life, studies, and relationships.

 **Read more at**  
<https://www.chula.ac.th/en/highlight/46237/>



# SPOTLIGHT

Discover Chula's outstanding innovations that have made impact on society, such as innovations to fight COVID-19, and get to know the Chula scientists listed among the top 2% of global scientists.

## Chula in the News:

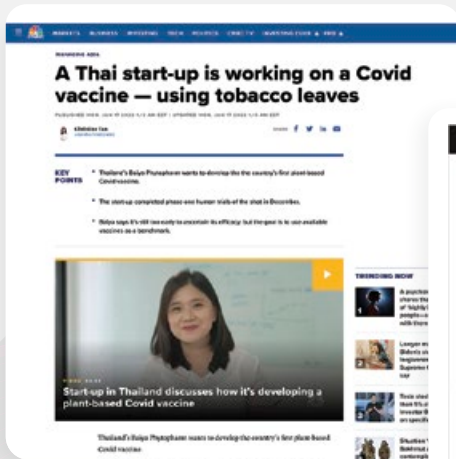
### ChulaCov19 mRNA Vaccine

"ChulaCov19" is Southeast Asia's first mRNA COVID-19 vaccine developed by the Chula Vaccine Research Center at Chulalongkorn University and King Chulalongkorn Memorial Hospital, in collaboration with Pennsylvania University's Professor Drew Weissman, a world-renowned physician-scientist best known for contributions to RNA biology.

"We realize that there are a lot of hurdles ahead. But even if our COVID-19 vaccine fails, our team is building capacity for the future. We can now manufacture new mRNA vaccines quickly, so we are more ready for the next pandemic. Whether it is a new variant or disease, we can handle it and keep the price lower than the Big Pharmas."

Prof. Dr. Kiat Ruxrungtham,  
Head of Chula Vaccine Research Center

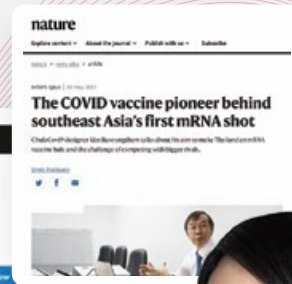
#### CNBC



#### Forbes



#### Nature



## Chula in the News:

### Baiya Vaccine

"Baiya Vaccine", a COVID-19 protein subunit vaccine produced from tobacco leaves by Baiya Phytofarm Co., Ltd. (under CU Enterprise), is the work by two researchers: Asst. Prof. Dr. Suthira Taychakhoonavudh and Assoc. Prof. Dr. Waranyoo Phoolcharoen, from the Faculty of Pharmaceutical Sciences, Chulalongkorn University.

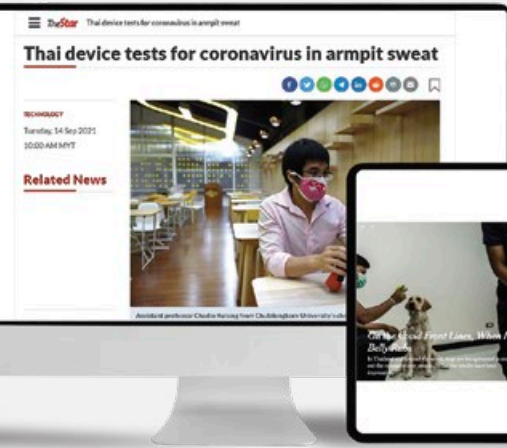


## Chula in the News:

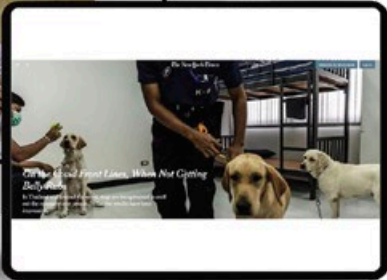
# Sniffer Dogs and COVID-19 Portable Sweat Test Device

A successful project to train sniffer dogs to detect COVID-19 in human sweat with 95% accuracy. The project has also successfully produced, for the first time in Thailand, a portable testing device to detect specific odors in the sweat of persons infected with the coronavirus.

### The Star



### The New York Times



## Innovations Against COVID-19

Chula has successfully developed a number of innovations to fight the COVID-19 pandemic as part of its mission to play a leading role in “Creating Knowledge and Innovation to Promote Sustainable Development for Society”.

**Read more at** <https://www.chula.ac.th/en/news/46593/>  
**Watch the video:** <https://youtu.be/3gYGcX5H9I8>



**Professor Michael Maes**  
 Department of Psychiatry, Faculty of Medicine, Chulalongkorn University.



## Chula Scientists Listed Among Top 2% of Global Scientists by Elsevier

As of 2022, Chula scientists have been listed among the top 2% in the world, based on published research papers.

The list includes 45 professors from various faculties, namely the Faculty of Allied Health Sciences, Faculty of Commerce and Accountancy, Faculty of Dentistry, Faculty of Engineering, Faculty of Medicine, Faculty of Nursing, Faculty of Pharmaceutical Sciences, Faculty of Science, Faculty of Veterinary Science, School of Integrated Innovation, Social Research Institute, The Institute of Biotechnology and Genetic Engineering and The Petroleum and Petrochemical College.

The selection is based on the top 100,000 scientists by c-score (with and without self-citations) or a percentile rank of 2%, according to the September 2022 data-update for "Updated science-wide author databases of standardized citation indicators".

**Read more at** <https://www.research.chula.ac.th/news/16200/>



/41

## Chula Researcher Listed Among the Highly Cited Researchers 2021 by Clarivate

Professor Michael Maes, Department of Psychiatry, Faculty of Medicine, Chulalongkorn University, was selected as one of the ‘Highly Cited Researcher 2021’ in the category of Neuroscience and Behavior by Clarivate. His research articles have been listed as in the top 1 percent of highly cited papers and publications yearly, in the Web of Science™ citation index.

**Read more at** <https://www.research.chula.ac.th/news/13577/>



# ONLY @CHULA

Explore Chula's highlight projects and showcases, such as Chula Zero Waste, FAAMAI, Museum of the Human Body, The Halal Science Center, and Chula UltimateX Library.

## FAAMAI

The Faculty of Fine and Applied Arts Multidisciplinary Art Innovation Center, or FAAMAI, is a creative research project initiated by the Faculty of Fine and Applied Arts, Chulalongkorn University. FAAMAI aims to provide digital art facilities and equipment for students, researchers, artists and the general public. The idea is to develop a new generation of local skilled artists and create a center for digital entertainment. Located next to the CU Centenary Park, Samyan district, the FAAMAI futuristic dome hosts exhibitions and events, with a studio space on the premises equipped with tools for digital arts production.

Interested persons can visit  
IG: [https://www.instagram.com/faamai\\_digital\\_arts\\_hub/](https://www.instagram.com/faamai_digital_arts_hub/)  
Facebook: <https://www.facebook.com/chulafaamai>  
for more details and updates on events.

## Museum of Human Body

The Museum of Human Body at Chulalongkorn University's Faculty of Dentistry is the first in Southeast Asia and one of the 11 museums in the world with an exhibition of plastinated human bodies, a technique to preserve bodies or body parts by replacing water and fat in the tissues with liquefied plastics.

Tel: +66 2218 8635  
E-mail: [dentchula.museum@gmail.com](mailto:dentchula.museum@gmail.com)

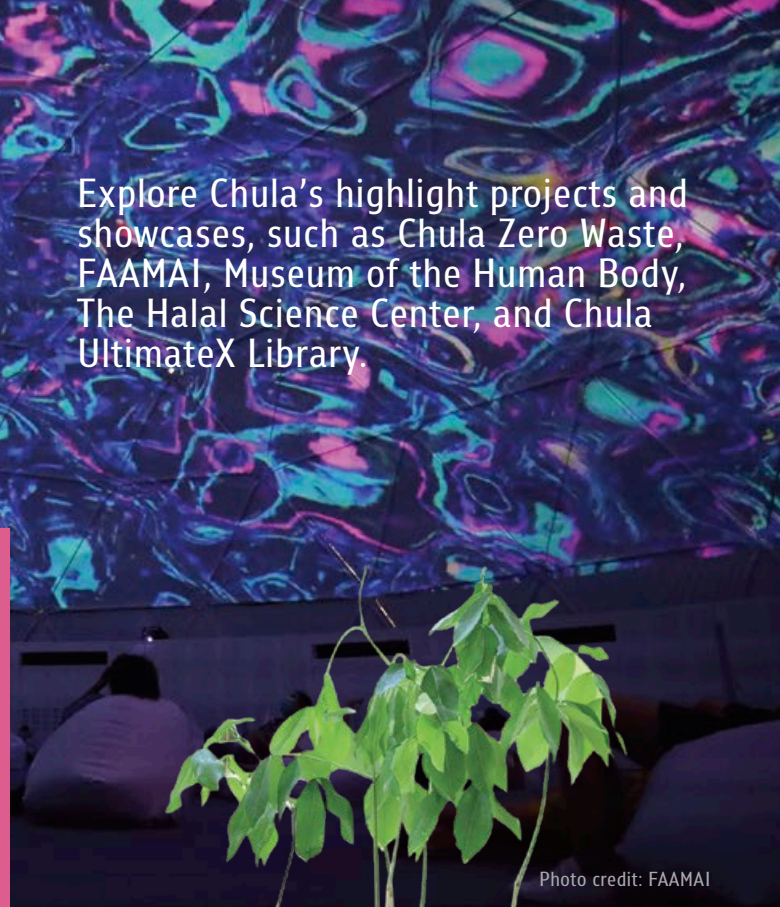


Photo credit: FAAMAI

## Chula Zero Waste

The Chula Zero Waste program is a joint effort between Chulalongkorn University's Environmental Research Institute, Physical Resources Management Office, and the network of Chula faculty and students to reduce the amount of waste on campus to zero. The program involves 3Rs: Reduce, Reuse, and Recycle. Moreover, it strives to eliminate the creation of waste in the first place and has implemented several strategies, such as reducing the use of plastic bags at various cooperating stores on and near the campus and by encouraging Chula community members to carry eco-friendly cloth bags or reusable bags.



For more information and updates, visit the Chula Zero Waste Facebook at [www.facebook.com/chulazerowaste/](https://www.facebook.com/chulazerowaste/).





# The Halal Science Center

The Halal Science Center is committed to the technological research and development of Halal-related sciences and the verification of Halal products and food to comply with the sanctity required in Islamic law. The center is also actively generating and transferring knowledge and innovation about Halal products to the public, through studies and seminars.



Read more at

<https://www.chula.ac.th/en/highlight/84218/>



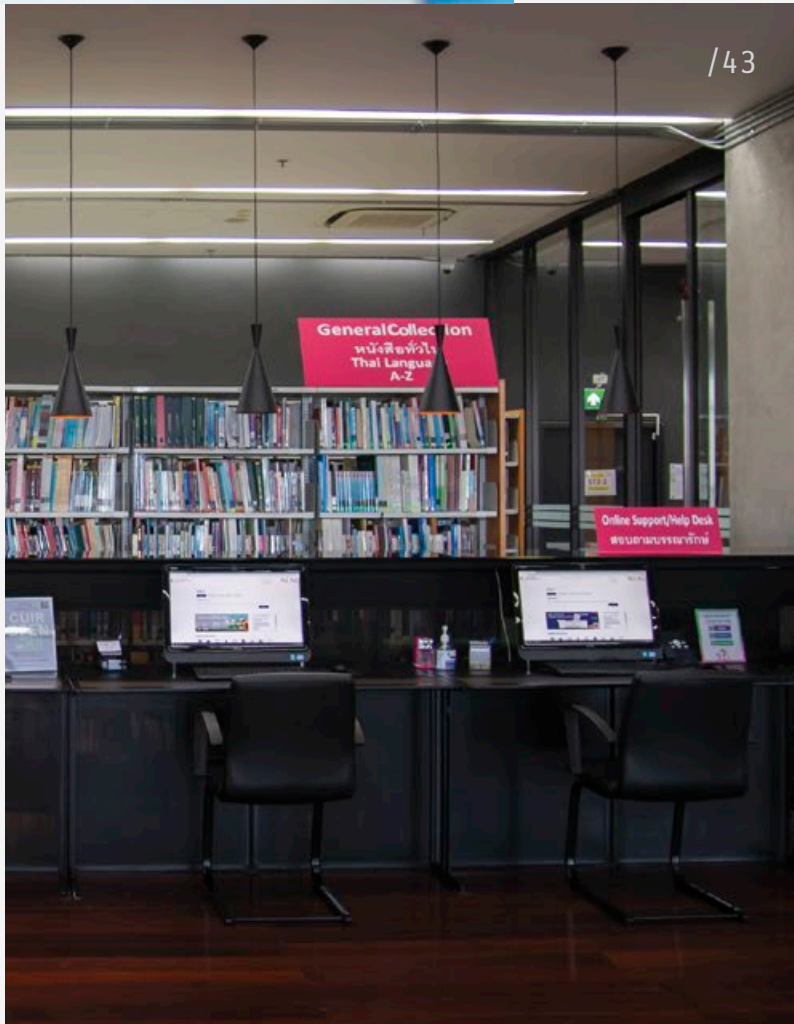
# Chula UltimateX Library

## The first fully automated library in Thailand

Chula UltimateX Library is supported by Kasikorn Thai Bank under the CU NEX project. The library is dubbed as the first automated library that combines innovation in library management through automated service stations with remote controlled building management. With the help of technology, library visitors can use the automated service stations with ease and get answers to inquiries. The communication systems and tools provided by the library are available through remote consultation and the library's opening and closing, control of the lights, air-conditioning, or even security can be commanded from a distance. Chula UltimateX Library gathers under one roof resources and materials from the faculties of Psychology, Allied Health Sciences, Sports Science, Nursing, and Chula Graduate School, and is accessible to students of all faculties.

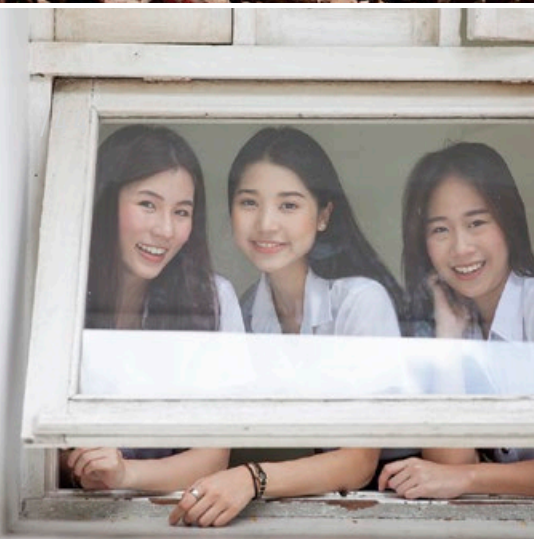


Watch the video: <https://youtu.be/U3LZJm2IZ3M>



# FACULTIES & DEPARTMENTS

Chula has 19 faculties, and 24 schools, colleges, and institutes.



**01** Chulalongkorn University Council

**02** University Office of  
Administrative Affairs

**03** Faculties/ Schools/ Colleges/  
Research Institutes

**Faculties**

Allied Health Sciences  
Architecture  
Arts  
Commerce and Accountancy  
Communication Arts  
Dentistry  
Economics  
Education  
Engineering  
Fine and Applied Arts  
Law  
Medicine  
Nursing  
Pharmaceutical Sciences  
Political Science  
Psychology  
Science  
Sports Science  
Veterinary Science

**Schools**

School of Agricultural Resources  
School of Integrated Innovation

**Colleges/ Institutes**

College of Population Studies  
College of Public Health Science  
The Petroleum and  
Petrochemical College  
Graduate School  
Language Institute  
Sasin School of Management

**Research Institutes**

Aquatic Resources Research Institute  
Energy Research Institute  
Environmental Research Institute  
Social Research Institute  
The Institute of Asian Studies  
The Institute of Biotechnology and  
Genetic Engineering  
The Institute of Thai Studies  
The Metallurgy and Materials Science  
Research Institute  
Transportation Institute

**04** Office of the Registrar

**05** Office of Academic Resources

**06** Centers Under the Supervision of the University

Scientific and Technological Research Equipment Center  
The Sirindhorn Thai Language Institute  
Chulalongkorn University Laboratory Animal Center  
The Halal Science Center  
Center of Learning Network for the Region (CLNR)

**07** Centers Under the Supervision of the President

Confucius Institute

**08** Centers Under the Supervision of the University  
and the Support of Other Agencies

Center of Excellence on Hazardous Substance Management  
Center of Excellence on Petrochemical and Materials Technology  
Center of Excellence on Biodiversity

**09** Centers Under the Supervision of the Faculties  
/Institutes

Center for European Studies (Faculty of Political Science)  
Center for Buddhist Studies (Institute of Thai Studies)  
Center for Russian Studies (Faculty of Arts)  
Indian Studies Center (Institute of Asian Studies)  
ASEAN Studies Center (Faculty of Economics)

**10** Enterprises Under the Supervision  
of the University

Chula Radio  
Chula Book Center  
Chulalongkorn University Printing House  
Chulalongkorn University Press  
Chula Unisearch  
Chulalongkorn University Academic Test Center

**11** Property Management of Chulalongkorn  
University (PMCU)

**12** Chulalongkorn University  
Intellectual Property Institute (CUIP)

# PARTNER UNIVERSITIES

Chulalongkorn University currently has 870 agreements for cooperation with universities and institutions from over 50 countries worldwide.



## Number of Academic Cooperations and Agreements

(updated as of March 2023)

The university recognizes that knowledge and growth can be gained through participation and is actively involved in academic and research collaborations with universities and institutions around the world. Academic partnerships have been formed to benefit students, teachers, researchers, and society. The current 870 active agreements include:

### Level of Cooperation

University-to-  
University  
Level

469

collaborations

Faculty-to-  
Faculty  
Level

401

collaborations



Top  
10

## Locations of International Partner Universities / Institutes

1	Japan	105	6	France	26
2	United States of America	49	7	Republic of China (Taiwan)	23
3	People's Republic of China	39	8	Australia	20
4	Germany	32	9	United Kingdom	23
5	South Korea	30	10	Canada	12

## Location of Partner Universities / Institutes

870 Collaborations, 545 Universities / Institutes, (updated as of March 2023)  
<http://cubic.inter.chula.ac.th/map?d=collaboration>

1	Argentina	2	29	Mongolia	2
2	Australia	20	30	Myanmar	1
3	Austria	5	31	Netherlands	11
4	Belgium	4	32	New Zealand	3
5	Brazil	1	33	Norway	4
6	Canada	12	34	Pakistan	1
7	Croatia	1	35	People's Republic of China	39
8	Czech Republic	3	36	Peru	2
9	Denmark	5	37	Philippines	7
10	Egypt	1	38	Poland	2
11	Finland	7	39	Portugal	3
12	France	26	40	Republic of China (Taiwan)	23
13	Germany	32	41	Romania	3
14	Hong Kong	7	42	Russia	3
15	Hungary	3	43	Singapore	8
16	Iceland	1	44	South Africa	1
17	India	2	45	South Korea	30
18	Indonesia	7	46	Spain	8
19	Iran	4	47	Sri Lanka	1
20	Israel	1	48	Sudan	1
21	Italy	11	49	Sweden	10
22	Japan	105	50	Switzerland	7
23	Lao PDR	1	51	Thailand	14
24	Lithuania	2	52	Turkiy	1
25	Luxembourg	1	53	Uganda	1
26	Macau	1	54	United Kingdom	23
27	Malaysia	9	55	United Nations	1
28	Mexico	3	56	United States of America	49
			57	Vietnam	9

Total  
870  
collaborations



# ADMISSION

Chula welcomes all prospective students to the international undergraduate and graduate programs.

# DEGREE STUDENTS

## Undergraduate Programs

Chulalongkorn University welcomes international applicants (non-holders of a Thai passport) to join the international programs. Currently, 19 undergraduate programs are offered in English.



**For more information, visit**

<https://www.chula.ac.th/en/academics/admissions/undergraduate-admissions/>



There are two admission rounds, Early Admissions and Regular Admissions. The application period is from December to February. (Applicants should note the application dates for each program.)

## Graduate Programs

Prospective graduate students should apply directly to the International Program(s) they are interested in, as application deadlines vary by program. The faculty website, contact information, and program description are accessible via the link: <https://www.chula.ac.th/en/academics/admissions/graduate-admission/>



**Visit**

<https://www.chula.ac.th/en/academics/admissions/graduate-admission/>



# NON – DEGREE STUDENTS

/49

## Visiting Students

International students are students who, at their own initiative, join to study at a university other than his/her own institution. Tuition fees are paid at the host university.

Additional information about fees and application are available online.



**Visit**

<https://www.chula.ac.th/en/academics/exchange-student/>



## Exchange Students

Students who join to study at a partner university under an existing MOU or network may enroll to study for one semester or one academic year as an exchange student. Exchange students can obtain academic transcripts, but are not permitted to get a degree from the partner university. Exchange students are exempted from paying tuition fees at the host or partner university, but must pay the tuition at their home university.

If interested, students are required to contact their home university to determine if requirements are met. Students can then nominate themselves as exchange students to the Office of International Affairs and Global Network at Chulalongkorn University.

To check the recruitment process for inbound exchange students to Chula,



**Visit**

<https://www.chula.ac.th/en/academics/exchange-student/>



**Contact Information:**  
**Office of International Affairs and Global Network**  
Tel: +66 2218 3335  
E-mail: [cuexchange.inbound@chula.ac.th](mailto:cuexchange.inbound@chula.ac.th)



# ACADEMIC CALENDAR

Find out about the opening dates, deadlines,  
and important happenings during the  
Academic Year at Chulalongkorn University.

# SEMESTER SYSTEM

1	First Semester (Fall Semester)	Teaching starts	August
		Midterm examinations (if any)	October
		Final examinations	December
2	Second Semester (Spring Semester)	Teaching starts	January
		Midterm examinations (if any)	March
		Final examinations	May
3	Summer Session	Teaching starts	June
		Final examinations	July

# TRIMESTER SYSTEM

1	First Trimester	Teaching starts	August
		Midterm examinations (if any)	September
		Final examinations	November
2	Second Trimester	Teaching starts	December
		Midterm examinations (if any)	January
		Final examinations	March
3	Third Trimester	Teaching starts	April
		Midterm examinations (if any)	May
		Final examinations	July

# TUITION FEES FOR INTERNATIONAL STUDENTS

International student tuition fees at Chulalongkorn University are reasonable compared to most international programs in Southeast Asia.



Considering the long-term skills and knowledge that students acquire upon graduation, the tuition fees for international students in Thailand are competitive and reasonable compared to most universities across the globe. Based on the amount of specialization required, tuition fees for international students are divided into 5 groups:

## Group

### 1 LIFE SCIENCES (1)

#### Faculty/School/College:

Medicine

Dentistry

Veterinary Science

#### Multidisciplinary Program:

Medical Microbiology

Biomedical Sciences

Dental Biomaterials Science

Physiology

Bioinformatics and Computational Biology

## Group

### 2 LIFE SCIENCES (2)

#### Faculty/School/College:

Psychology, Nursing

Pharmaceutical Sciences

Allied Health Sciences

Sports Science

Public Health Sciences

#### Multidisciplinary Program:

Pharmacology

## Group

### 3 PHYSICAL SCIENCES

#### Faculty/School/College:

Science

Engineering

Architecture

Integrated Innovation

#### Multidisciplinary Program:

Nanoscience and Technology

Environmental Science

Hazardous Substance and Environmental Management

Energy Technology and Management



For more information, visit

<https://www.chula.ac.th/en/academics/admissions/tuition-and-fees/>



## Group

### 4 SOCIAL SCIENCES

#### Faculty/School/College:

Education

Law

Communication Arts

Commerce and Accountancy

Political Science

Economics

Agricultural Resources Administration

Population Studies

#### Multidisciplinary Program:

Risk and Disaster Management

Logistics and Supply Chain Management

Cultural Management

Maritime Administration

Korean Studies

Human and Social Development

English as an International Language

European Studies

Environment

Development and Sustainability

Southeast Asian Studies

Technopreneurship and Innovation Management

## Group

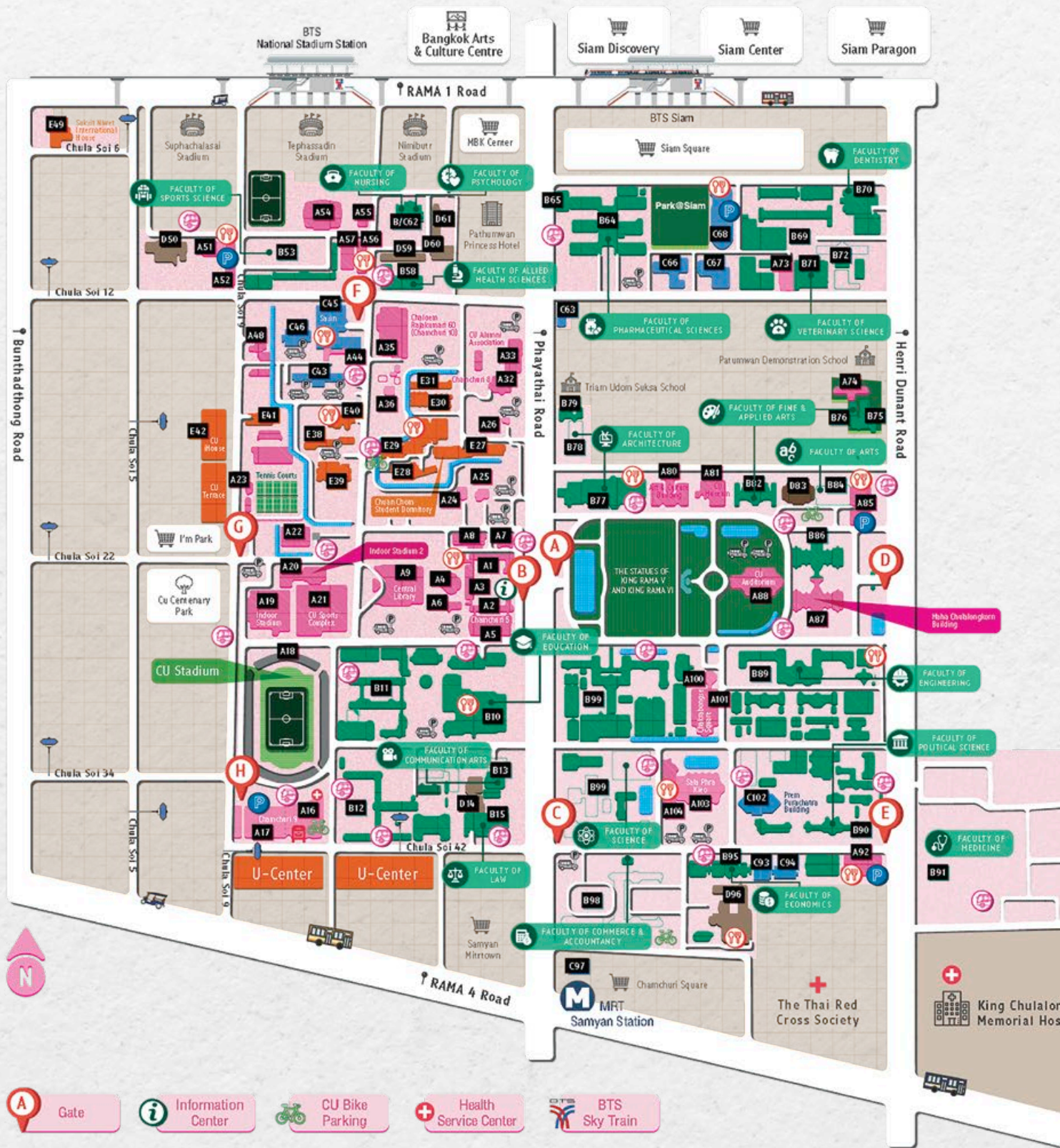
### 5 ARTS & HUMANITIES

#### Faculty/School/College:

Arts

Fine and Applied Arts







# CHULALONGKORN UNIVERSITY MAP

## Offices Of The University

**A**

Building	No.
Art & Culture Building	A80
Chakrabongse Building	A100
Chakrabongse Square	A101
Chaloem Rajasuda Sport Center (CU Sports Complex)	A21
Chaloem Rajakumari 60 (Chamchuri 10)	A35
Office of International Affairs and Global Network	
Chamchuri 1	A1
Chamchuri 2	A2
Chamchuri 3	A3
Chamchuri 4	A4
Chamchuri 5	A5
Chamchuri 6	A6
Chamchuri 8	A32
(Chamchuri Art Gallery)	
Chamchuri 9	A16
Chantanyingyong Building	A54
Chula Chakrabongse Building	A104
CU Animal Laboratory Center	A73
CU Alumni Association	A33
CU Auditorium	A88
CU Printing House	A8
CU Stadium	A18
CU Thai House	A36
Chula Phat 9	A56
Chula Phat 10	A57
Chula Phat 14	A51
Chula Wit 1	A74

CU Museum	A81
Dhamma Center	A22
Gymnasium	A55
Indoor Stadium	A19
Indoor Stadium 2	A20
Maha Chulalongkorn Building	A87
Maha Thirarachanusorn Building	A9
The Office of Academic Resources (Central Library)	
Multi-Storey Car Park 1	A17
Multi-Storey Car Park 2	A85
Multi-Storey Car Park 3	A92
Multi-Storey Car Park 4	A52
Office of Property Management	A7
Ruan Anusasok	A26
Ruan Chula Narumit	A24
Ruan Pharot Racha	A25
Sala Phra Kieo	A103
Sasa Phala Building	A44
Tennis Clubhouse	A23
Waen Kao Building	A48

## Faculties / Schools / Colleges

**B**

Building	No.
Faculty of Allied Health Sciences	B58
Faculty of Architecture	B77
Lert Urasyananda Building	B78
Wothayakorn Building	B79
Faculty of Arts	B84
Maha Chakri Sirindhorn Building	B84
Maha Vajiravudh Building	B86
Faculty of Commerce & Accountancy	B98

Faculty of Communication Arts	B13
Faculty of Dentistry	B69
CU Dental Hospital	B70
Faculty of Economics	B95
Faculty of Education	B10
CU Demonstration Elementary School	B11
CU Demonstration Secondary School	B12
Faculty of Engineering	B89
Faculty of Fine & Applied Arts	B82
Building 3	B75
Building 4	B76
Faculty of Law	B15
Thep Thawarawadi Building	
Faculty of Medicine	B91
King Chulalongkorn Memorial Hospital	
Faculty of Nursing	B62
Faculty of Pharmaceutical Sciences	B64
Community Pharmacy (Osot Sala)	B65
Faculty of Political Science	B90
Faculty of Psychology	B62
Faculty of Science	B99
Faculty of Sports Science	B53
Faculty of Veterinary Science	B71
Emergency and After-hours Clinic	B72
Petroleum and Petrochemical College	B47
Institute of Metallurgy and Materials Science Research	

## Institutes / Centers

**C**

Building	No.
Borommaratchachonnani	C62
Srisattaphat Building	
Chamchuri Square Building	C97
CU Intellectual Property Institute	
CU Research Building	C46
Chula Unisearch	
Fire Safety Research Center	C63
Institute Building 2	C66
Institute of Environmental Research Scientific & Technological Research Equipment Center	
Institute Building 3	C67
Aquatic Resources Research Institute	
College of Public Health Sciences	
Energy Research Institute	
Institute of Biotechnology & Genetic Engineering	
Institute of Technology for Rural Development	
Prajadhipok-Rambaibani Building	C94
Institute of Asian Studies	
Institute of Thai Studies	
Transportation Institute	
Prem Purachatra Building	C102
Language Institute	
Sasa Pathasala Building	C45
Sasin Graduate Institute of Business Administration	
Visid Prachuabmoh Building	C93
College of Population Studies	
CU Social Research Institute	
Withthayakit Building	C68
CU Book Center	
The School of Agricultural Resources (SAR)	
Withthayaphatthana Building	C43
CU Radio Station	

## Central Academic Buildings

**D**

Building	No.
Borommaratchakumari Building	D83
Chula Phat 2	D59
Chula Phat 4	D60
Chula Phat 5	D61
Mahittalathibet Building	D96
Pinitprachanart Building	D14

## Halls Of Residence

**E**

Building	No.
Chuan Chom Student Dormitory	E27
Chula Niwas Staff Hall of Residence	E41
Chula Niwes Staff Hall of Residence	E38
Champa Student Dormitory	E31
Champi Student Dormitory	E30
CU International House	E42
Phut Son Student Dormitory	E29
Phut Tan Student Dormitory	E28
Sasa Niwet International House	E40
Suksit Niwet International House	E49
Withthayanivet Staff Hall of Residence	E39

- Offices of the University
- Institutes / Centers
- Faculties / Schools / Colleges
- Halls of Residence
- Central Academic Buildings

## GATES

- A Phayathai Road Gate 1 (The Statues of King Rama V and King Rama VI)
- B Phayathai Road Gate 2 (Offices of the University)
- C Phayathai Road Gate 3 (Faculty of Commerce & Accountancy)
- D Henri Dunant Road Gate 1 (Faculty of Arts)
- E Henri Dunant Road Gate 2 (Faculty of Political Science)
- F Chula Soi 12 Gate 1 (Sasin)
- G Chula Soi 9 Gate 1 (Dhamma Center)
- H Chula Soi 9 Gate 2 (Chulalongkorn Stadium)



# CONTACT

---

## Chulalongkorn University

---

254 Phayathai Road, Pathumwan,  
Bangkok 10330 Thailand

Tel: +66 2215 3555

Website: [www.chula.ac.th/en/](http://www.chula.ac.th/en/)

Facebook: Chulalongkorn University

YouTube: Chulauniversity

Instagram: Chulalongkorn.university

LinkedIn: Chulalongkorn University

---

## Contact for enquiries related to international affairs:

---

Office of International Affairs and Global Network

18<sup>th</sup> Floor, Chaloem Rajakumari 60 Building  
(Chamchuri 10 Building), Chulalongkorn University

Tel: +66 2218 3126

E-mail: [int.off@chula.ac.th](mailto:int.off@chula.ac.th)

Website: [www.inter.chula.ac.th](http://www.inter.chula.ac.th)

Facebook: <https://www.facebook.com/ChulaOIA>





\*Information in this document is subject to change.  
Copyright 2023. Chula Communication Center (CCC).



[www.chula.ac.th](http://www.chula.ac.th)

